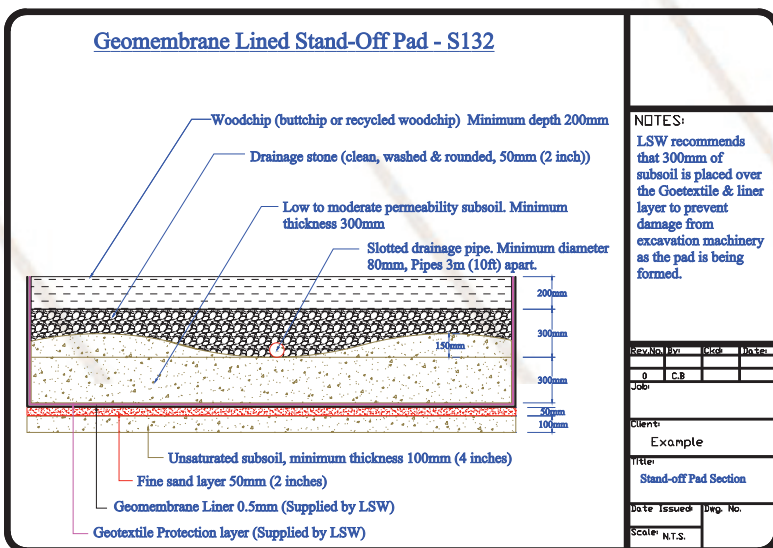


STAND-OFF PADS (Out-Wintering Pads)

- The total depth of a pad is 800mm (2 ½ foot). The topsoil should be excavated first and stored separate to the subsoil, at one side of the pad. The pad is to be finished 300mm (1 foot) above the surrounding field level, so a small embankment will be needed around the edges. You will only need to excavate down 500mm & build up the other 300mm. The base of the excavation is then covered with 50mm (2 inches) of sand.
- The lining material is laid on the sand and turned up around the four sides to ground level.
- A protection geotextile is placed over the lining membrane to protect it from stone damage.
- 450mm (1½ foot) of subsoil is then backfilled on top of the geotextile.
- Troughs are then dug into the sub-soil 3m (10 feet) apart and 150mm (6 inches) deep.
- Slotted 80mm (3½ inch) ducting pipe is placed in the trough of each ridge. These all connect to a 150mm (6 inch) solid pipe.
- The entire area is covered with 200kg/m² of round stone 50mm (2 inch) in diameter.
- Lastly the area is finished off with a covering of 50kg/m² (8 - 9 inches) of woodchips. Small chips known as butt reduced chips or post plant chips work well.



Typical Construction Detail

- Animals fed **on** the Pad will need 18m²/animal (adult).
- Animals fed **off** the Pad will need 12m²/animal (adult).
- The top 75mm (3 inches) will be removed every year and land spread.
- Effluent can be diverted into a reedbed, collection tank or lined lagoon.
- Overall cost for completed pad works out at approximately €225/animal not including feed barrier or concreted apron. The cost for the liner and geotextile is €5/m² approx, plus VAT @ 21% + delivery.